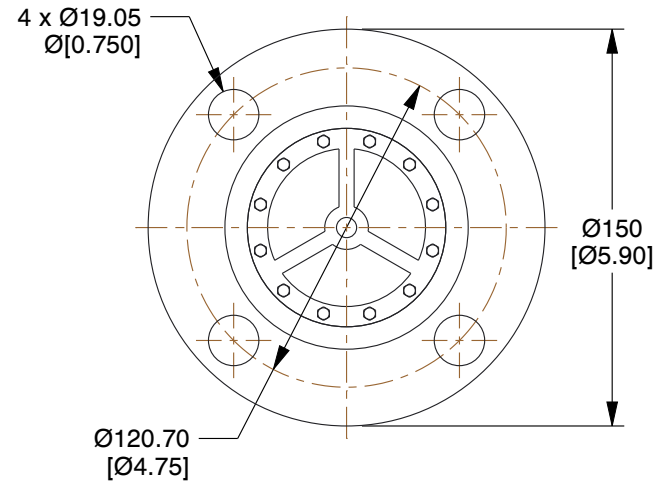
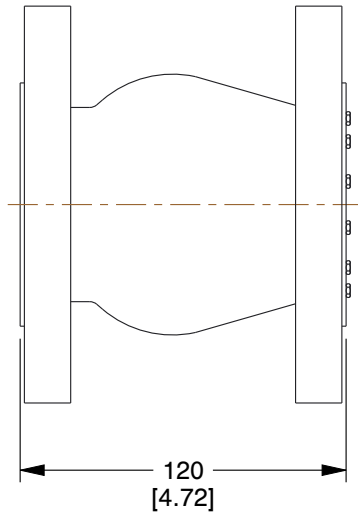


RF DETAIL VIEW



NOTES:

1. VALVE SIZE: 50MM (2 INCH).
2. PRESSURE RATING: AS PER ASME/ANSI B16.34.
3. END CONNECTION: DOUBLE FLANGE AS PER ASME/ANSI B16.5
OTHER END CONNECTIONS ARE AVAILABLE ON REQUEST.
4. TEST STANDARD: API 598.
5. BODY: 316 STAINLESS STEEL.
6. DISC: ASTM A351 GR.CF8M.
7. SEAT: INTERGRAL.
8. DIFFUSER: ASTM A351 GR.CF8M.
9. SPRING: INCONEL X-7602).
10. GUIDING BUSH: SS316.



Advance Valves
142 A & B, Noida Special
Economic Zone, NOIDA,
Phase II - 201 305 (India)
Phone No: + 91 120 479 6900

This file and any associated information and specifications are provided for reference and evaluation purposes only, and is subject to change without notice. Advance Valves makes no representations, warranties or guarantees as to the appropriateness, accuracy, completeness, or suitability for any purpose, of the file, information or specifications. You are solely responsible for the use of the file, information or specifications.

NZ15-CFAFCI-02-CA-31-N

50MM - AXIAL CHECK VALVE
NZ SERIES CLASS 150

SCALE	NTS
UNIT	MM[INCH]
SHEET	1 of 1